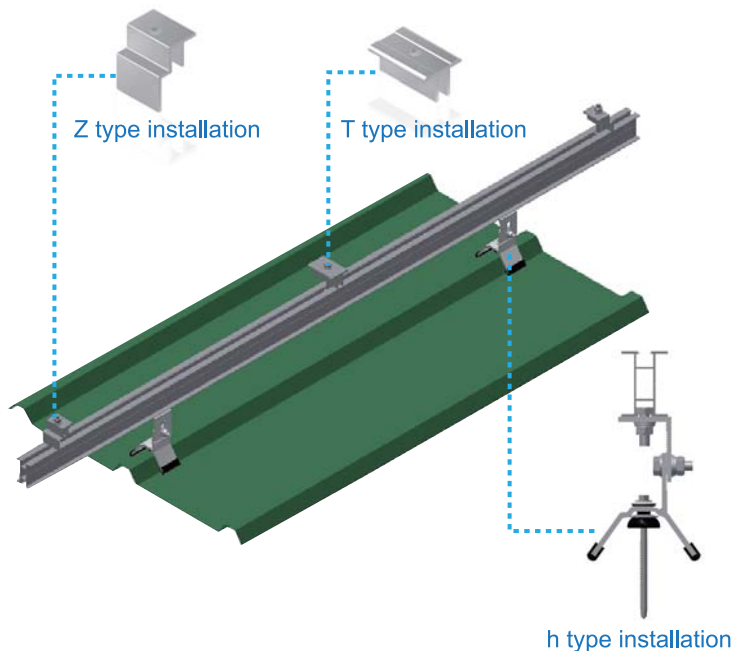




Jupiter Series h-Shaped Roof Mounting



Features and benefits

- Fastening sets consisting of a special h-shaped bracket, module height adjustable.
- Suitable for universal corrugated and trapezoidal metal roofs.
- The Unique domed washer molds to form a leak proof seal.
- Price advantage due to special design for quick installation.



Specification



AL-4040-023
T type bracket
Aluminum alloy
(6005-T5)



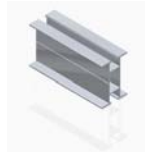
AL-4040-022
Z type bracket
Aluminum alloy
(6005-T5)



AL-4040-032
h shaped connector
Aluminum alloy
(6005-T5)



AL-4040-031
h type bracket
Aluminum alloy
(6005-T5)



AL-5035-001
Aluminum extrusion tube
Aluminum alloy
(6005-T5)



Domed Washer
Stainless +
EPDM rubber



Self-Drilling Screws
Stainless +
Carbon steel



Waterproof Gasket
Stainless +
EPDM rubber